

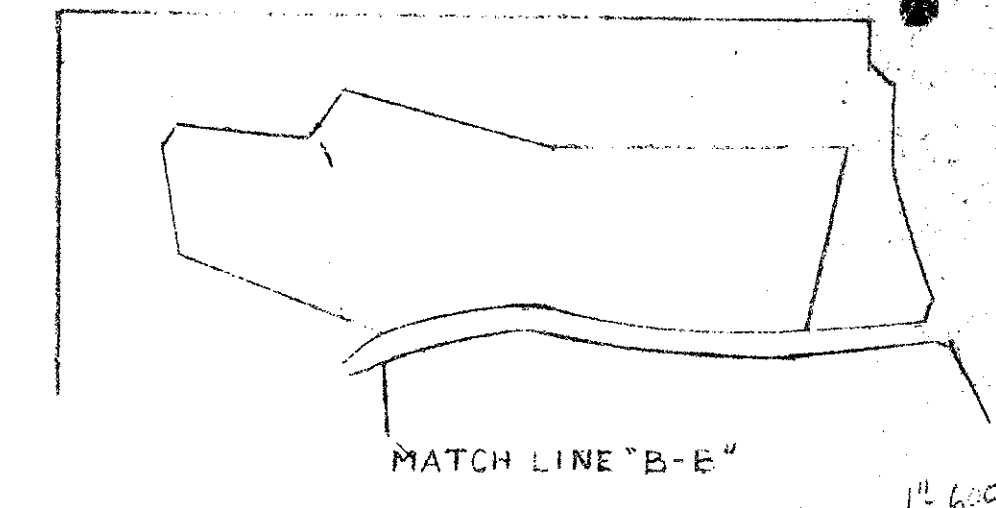
41-8

# INDIAN SPRING PLAT NO. 3

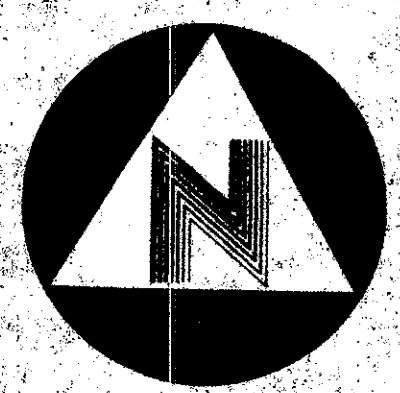
LYING IN THE EAST ONE-HALF, SECTION 34, AND THE WEST ONE-HALF SECTION 35, TOWNSHIP 45 SOUTH, RANGE 42 EAST PALM BEACH COUNTY, FLORIDA  
APRIL 1980

8

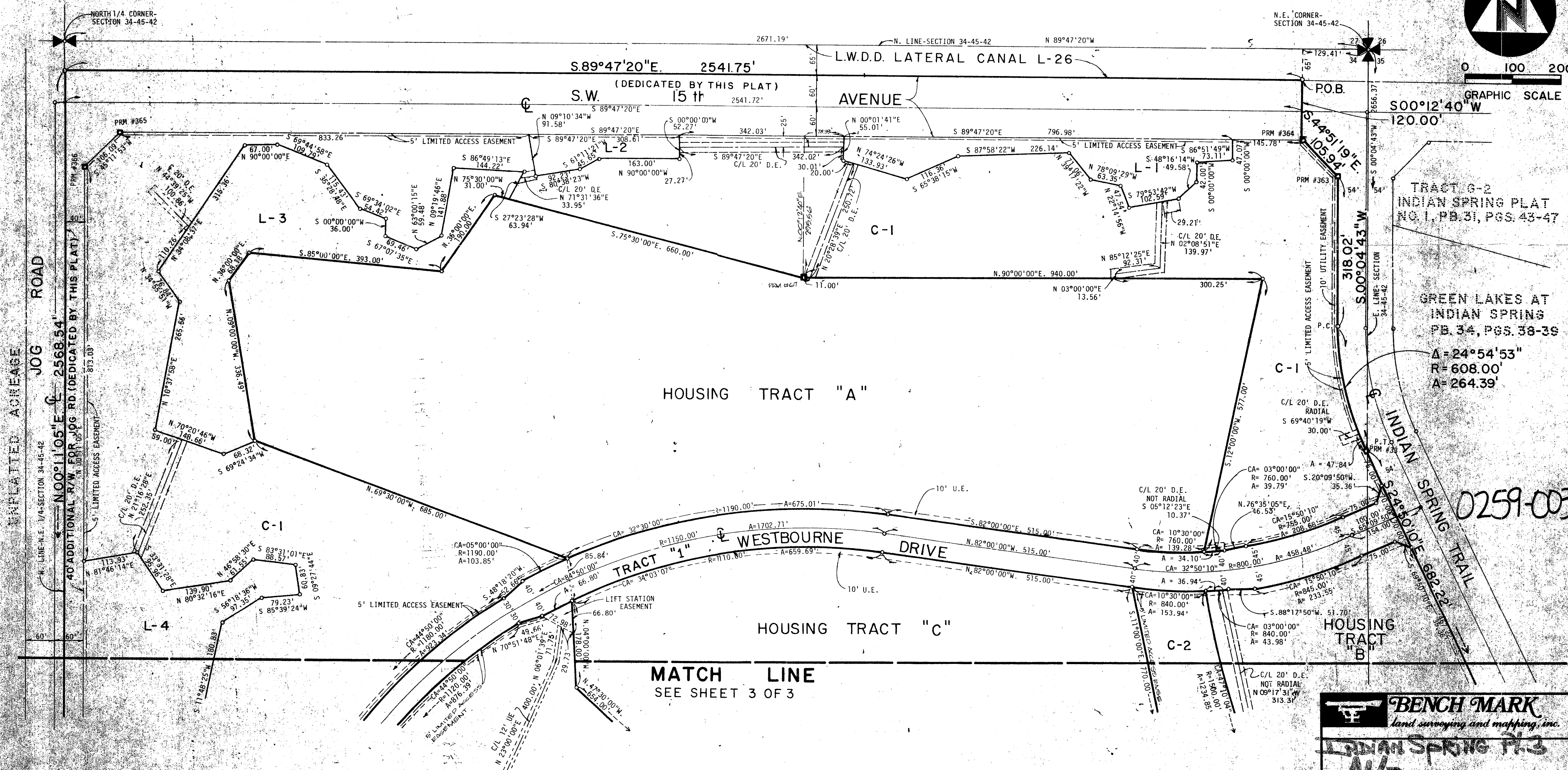
STATE OF FLORIDA  
COUNTY OF PALM BEACH  
THIS PLAT WAS FILED FOR RECORD AT THIS DAY OF A.D. 1980 AND DULY RECORDED IN PLAT BOOK ON PAGES AND  
JOHN B. DUNKLE, CLERK  
CIRCUIT COURT  
BY: DC.



UNPLATTED ACREAGE



0 100 200  
GRAPHIC SCALE



TRACT G-2  
INDIAN SPRING PLAT  
NO. 1, PB 31, PGS 43-47

GREEN LAKES AT  
INDIAN SPRING  
PB 34, PGS 38-39

A = 24°54'53"  
R = 608.00'  
A = 264.39'

0259-003

MATCH LINE  
SEE SHEET 3 OF 3

**BENCH MARK**  
land surveying and mapping, inc.

INDIAN SPRING PL 3  
41/8

OWN	E.J.T.	CKD	DATE	5-8-80	VOL. NO.	80-103
SCALE	1" = 100'	SHEET	2	OF	3	